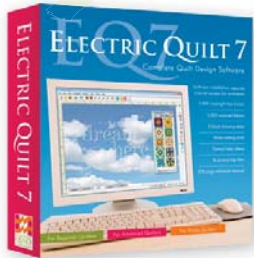


# Ellie's on-the-go Art Tote



The sky is the limit when it comes to designing in the newly released EQ7 - complete quilt design software from The Electric Quilt Company. The new Image Worktable gives you the ability to import images and edit them right in EQ7! You can edit your photos, apply effects, filters, and symmetries that enhance your photos so that your projects really stand out. Then the new Photo Layout feature makes printing easier and more efficient than ever!

Ellie's On-the-Go Art Tote is a great example of what EQ7 can do with your images. We took a child's scribbles (I mean masterpieces), and imported them to the EQ7 Image Worktable where we applied some fun photo effects. Plus, this adorable tote is easy to make and the special kids in your life will love showing off their drawings and having their own personal and portable art tote.

## Materials

- 6 printed drawings on EQ Printable Fabric Sheets
- Assorted pieces of fabric for trim
- 14" zipper
- 7" x 11" foam core board
- 8" x 5" paper pad with cardboard back
- Fusible fleece batting 12 1/2" x 26" (1/2 yard)
- EQ7 or other photo editing software

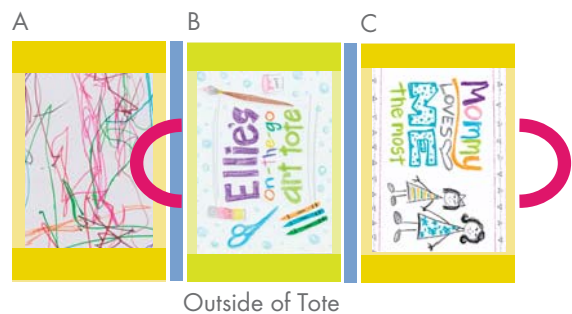
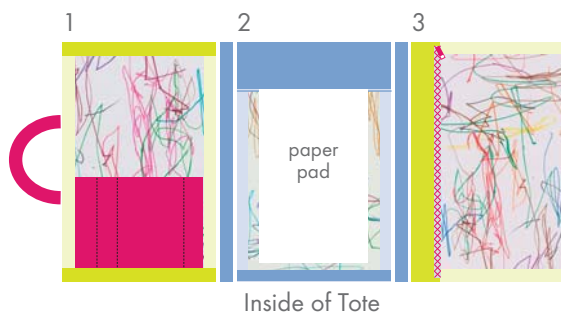
## Preparation

Gather your children's drawings and scan them at 300 dpi. Save them to your computer in jpeg format. Import the photos to your EQ7 Image Worktable or in other photo editing software. Apply effects, filters, and symmetries as desired. Using EQ7 Photo Layout, arrange and print your newly created photos as you want them. Follow the instructions in your EQ Printable Fabric package to prepare your printed fabric for sewing.



## Suggestion

• Tote is made from six 8" x 12" panels with 3/4" hinges. • 3 panels form the inside 1, 2, 3. • 3 panels form the outside A, B, C. To make a paper mock-up to help coordinate the trim colors front and back, cut two paper strips 8 1/2" x 4". Fold each in thirds. Label one 1-2-3. Label second A-B-C. Paste them together with labels facing out. Add notes about colors, pocket, zipper and drawing orientation to help keep it organized.



## Creating the Inside Panels: 1, 2, and 3

**Panel 1 has a pocket for pencils, crayons and scissors.**

**Step 1:** Choose a drawing printed on fabric. Add borders to make it 8 1/2" x 12 1/2" (all measurements include seam allowance.)

**Step 2:** Make pocket: Cut 7 1/2" x 8 1/2" piece of fabric. Fold in half-right sides together to 7 1/2" x 4 1/4". Stitch 1/4" seam on both ends. Turn right side out. Press. Position on section 1 with raw edge 1 1/2" from bottom and pocket hanging down. Stitch 1/4" seam across pocket edge. Flip pocket up into position. Stitch around 3 sides of the pocket. Make divisions by stitching 3 lines 1" apart at the left side and one line at 1" from the right side leaving a larger space in the middle for scissors.

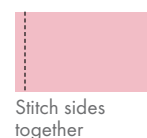
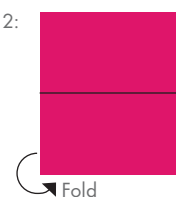
Step 1:



Finished Panel 1



Step 2:



Stitch around pockets and to make pocket sections

## Panel 2 has a slit for 8" x 5" paper pad.

**Step 3:** Choose a printed drawing. Add borders to sides and bottom to make it 8 1/2" x 12 1/2". Press under 2 1/4" at top to form inner lining of the pocket.

**Step 4:** Cut a 4 1/2" x 8 1/2" piece for top section. Press in half to 2 1/4" x 8 1/2".

**Step 5:** Now make the slit for the writing pad. Open out both folds. Place the fabrics right sides together, lining up the folds. Stitch 1 1/2" in from both outer edges on the fold line, leaving 5 1/2" in the center free. Refold pieces, one up, one down to expose the slit.

## Panel 3 has a zipper pocket.

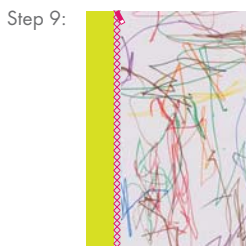
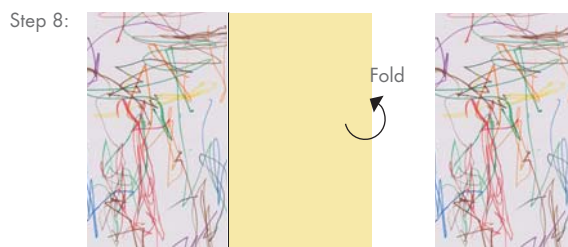
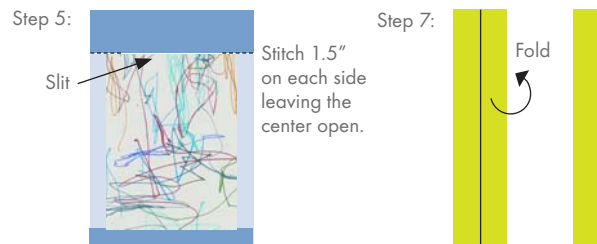
**Step 6:** Cut 8 1/2" x 12 1/2" piece for pocket lining.

**Step 7:** Cut a 3" x 12 1/2" strip for section above zipper. Fold in half wrong sides together to 1 1/2" x 12 1/2".

**Step 8:** Make a 14" x 12 1/2" piece using printed drawing plus added fabric for outside pocket bottom section. Fold in half wrong sides together to be 7" x 12 1/2".

**Step 9:** Attach zipper by top-stitching fold of each section to the edge of zipper tape. Place zipper so that pull is at top of tote. Much of the zipper will be exposed.

**Step 10:** Lay wrong side of zipper unit on top of right side of pocket lining. Zipper unit may need to be trimmed a bit. Baste around the outer edges of the two pieces, being careful over zipper teeth ends. Stitch over zipper teeth ends again and cut off extra zipper tape.



## Creating the Outside Panels: A, B, and C

### Panel A is the fold-over flap

**Step 11:** Piece 8 1/2" x 12 1/2" unit using a printed drawing and fabric strips.

### Panel B is center

**Step 12:** Piece printed drawing and border strips to make 8 1/2" x 12 1/2" unit. Drawing image orientation will have bottom to the right edge.

### Panel C is back of tote

**Step 13:** Piece printed drawing and border strips to make 8 1/2" x 12 1/2" unit. Drawing image orientation will have bottom to the left edge.

Steps 11, 12, and 13:



## Handles

**Step 14:** Cut two 1 1/2" x 9" strips.

**Step 15:** Cut two batting strips 3/4" x 9".



**Step 16:** Lay batting strip on wrong side of handle  $\frac{1}{4}$ " from one edge. Fold  $\frac{1}{4}$ " of handle over batting. Fold other side of strip over batting tucking under raw edge.

**Step 17:** Top-stitch both long edges of handle. Make other handle.

**Step 18:** Baste ends of one handle to center of left edge of panel B, spacing ends 3" apart.

**Step 19:** Baste ends of other handle to center of right edge of panel C, spacing ends 3" apart to line up with the other handles.

### Hinges: $\frac{3}{4}$ " Finished Size

**Step 20:** Cut 4 strips 1  $\frac{1}{4}$ " x 12  $\frac{1}{2}$ ", two for outside and two for inside.

### Putting It All Together

**Step 21:** Lay out the outside pieces: A/hinge/B/hinge/C. Sew together. Keep handles out of the way.

**Step 22:** Fuse batting to back of A B C unit. Lay batting fusible-side-up on ironing board, place A, B, and C unit on top and iron.

**Step 23:** Lay out the inside pieces 1/hinge/2/hinge/3. Sew together.

### Finish

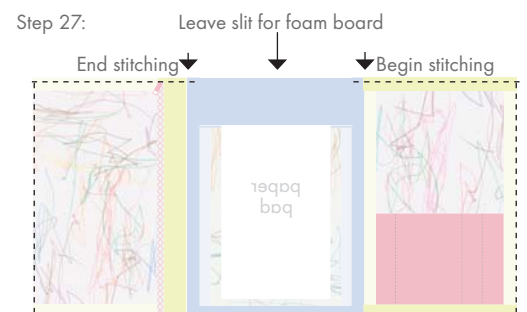
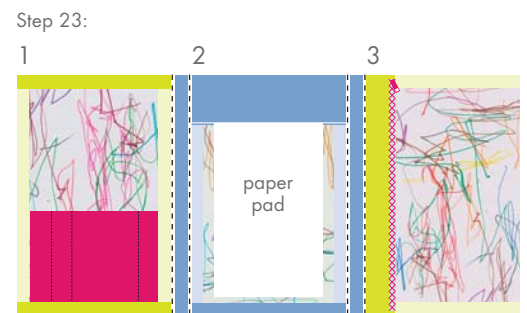
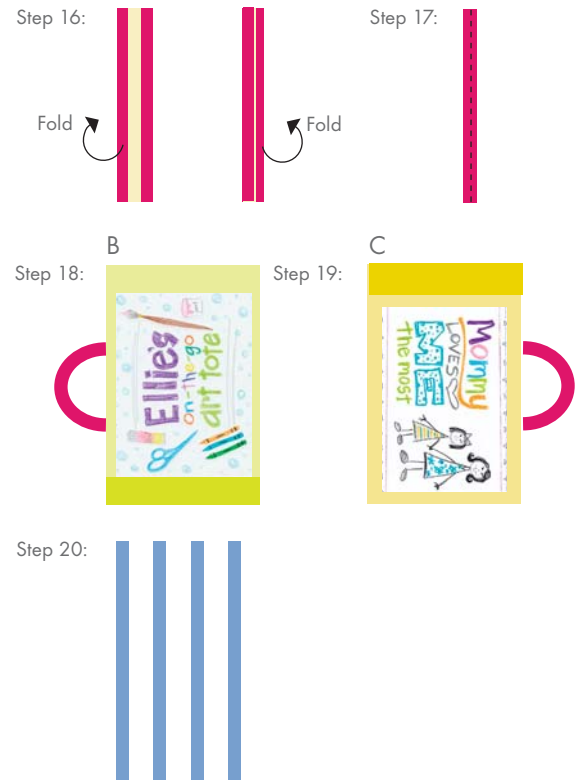
**Step 24:** Put A, B, and C right sides together with 1, 2, and 3. Keep handle inside.

**Step 25:** Stitch around outer edge with  $\frac{1}{4}$ " seam, beginning at right-top hinge section and ending at top-left hinge section. Leave center B-2 space open to insert board.

**Step 26:** Turn right side out. Quilt both long edges of hinges through the layers, lining up the inside and outside hinge seams.

**Step 27:** Insert the foam core board into opening at top center. Fold in the open edges and top-stitch close to the edge all around tote.

*And now you're done!* Add pencils to the pocket, slip the backing of a paper pad into the center, add your children's favorite crayons or toys to the pocket, fold it up and GO! This handy little Art Tote is perfect for occupying kids in the car, at church, or on an airplane. And the best part is that the Art Tote is made from their own unique creations so they will LOVE showing it off.



### How to order EQ7

Check with your local quilt shop to order EQ7. If you are an EQ6 owner ask about the EQ7 Upgrade.

Or you can order from The Electric Quilt Company

Website: [www.electricquilt.com](http://www.electricquilt.com)

Email: [sales@electricquilt.com](mailto:sales@electricquilt.com)

Phone: 1-800-356-4219